

SANIC

WATER FILTERS WITH
ANTIMICROBIAL
TECHNOLOGY



FILTER HOUSINGS WITH ANTIMICROBIAL TECHNOLOGY

DP SANIC for cartridges SX and BX

Range of housings with antimicrobial product protection provided by a silver based antimicrobial agent included in the plastic matrix with a specific injection molding technology: the antimicrobial technology infused into the housing helps prevent the growth of stain and odor causing bacteria keeping it cleaner for longer. DP SANIC housings are designed to work in combination with SANIC filter cartridges (see page 211) provided with the same antimicrobial technology and to keep the filter cleaner for longer in every single pore of their structure.

Housings with female IN/OUT configurations at 1/4", 3/8", 1/2", 3/4" and 1", with BSP or NPT threads, with or without brass inserts. All housings fit to SANIC cartridges with both SX (DOE) and BX (double o-ring) end-caps configurations, with heights from 5" to 20".

DP SANIC housings are available as MONO, DUO and TRIO models.

DP SANIC housings are suitable for every Point-of-Use (POU) and Point-of-Entry (POE) application, as single or multi-stage on-line filters. Thanks to the antimicrobial protection SANIC housings with SANIC filter cartridges are the most reliable sediment filtration systems for all drinking water application by keeping the filter cleaner for longer.

DP SANIC housings are manufactured with the finest and most advanced materials under constant focus on innovative processing technologies and ceaseless modernization to ensure the absolute quality of our products.

DP 10 SANIC housings and 10" SANIC FA and CPP filter cartridges as complete systems are tested and certified by WQA against NSF/ANSI 42 for Bacteriostasis effect.

DP SANIC housings are certified under the most stringent certification procedures and standards: DM 25 (Italy), ACS (France), EAC (Russia).

Custom combinations of colors are available upon minimum quantity.

A full set of accessories is available on demand to complete the housings kit: wall brackets, opening spanner, brass or plastic nipples with o-ring, FilterFit cartridge centering device.

SANIC is a registered trademark of ATLAS FILTRI srl.

Powered by Microban® antimicrobial technology



HOUSINGS DP SANIC

FOR CARTRIDGES SX and BX

Housings DP SANIC fit to both SANIC SX (DOE) cartridges and to exclusive SANIC BX cartridges with 45 mm double o-ring collar.

The full range of Atlas Filtri® SANIC SX and BX cartridges is suitable to DP SANIC housings and provides the widest range of water filtration units with ANTIMICROBIAL TECHNOLOGY.



SX SANIC
cartridges with standard flat seals.



BX SANIC
cartridges with 45 mm double o-ring collar.
Quick-fit connection for a perfect tightening.

ACCESSORIES INCLUDED



-X- spanner



-S- wall bracket



-DUO- wall bracket



-TRIO- wall bracket

ACCESSORIES ON DEMAND



3/4" brass nipples with o-ring (pair) CODE RB7404001

1" brass nipples with o-ring (pair) CODE RB7404002



3/4" plastic nipple
with o-ring CODE LB7404012



3/4"-1/4" plastic reduction
with o-ring CODE LB9020611



-LUBRIKIT- single-dose lubricant for housing o-ring
CODE RE9020650

SYMBOLS LEGEND



For domestic use



For technical and industrial use

CERTIFICATIONS



Systems tested and certified against NSF/ANSI 42 for bacteriostasis effect. Components tested and certified by WQA against NSF/ANSI Standards 42 and 61 for material and structural integrity requirements only.



The products are tested and certified under the most stringent procedures worldwide, in compliance with DM 25 (Italy), EAC (Russia) and with the sanitary certification ACS (France).



DP
HOUSINGS MODEL

10
HOUSINGS HEIGHT

MONO
VERSION

3/4"
IN / OUT

OT
THREADS TYPE

SANIC
BOWL TYPE

MONO

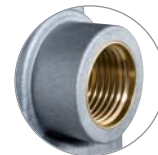


DUO TRIO

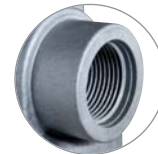


- 1/4"
- 3/8"
- 1/2"
- 3/4"
- 1"

OT - BRASS BSP*



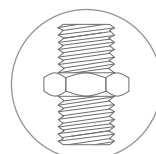
IN - PLASTIC BSP*



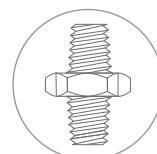
IN - NPT - PLASTIC NPT**



SANIC - CLEAR BOWL WITH ANTI-MICROBIAL AGENT



* BSP
parallel (cylindrical)
ISO 228



** NPT
tapered (conical)
ANSI/ASME B1.20.1



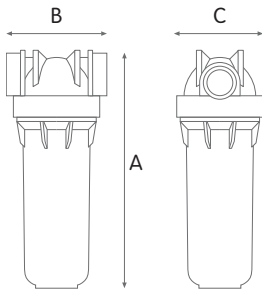
DP MONO SANIC

WORKING CONDITIONS

Max working pressure _____ 8 bar (116 psi)
 Max working temperature _____ 45°C (113°F)
 Min working temperature _____ 4°C (39,2°F)

SPECIFICATIONS

Non-toxic materials, suitable for drinking water.
 Head: reinforced polypropylene.
 Bowl: PET with antimicrobial technology.
 O-ring: EPDM.
 Breather-valve: body stainless steel, o-ring EPDM.
 IN/OUT brass threads: CW 614 N brass.



DP MONO SANIC

HOUSINGS WITH BRASS BSP THREADS

CODE	MODEL	SUITABLE CARTRIDGE	IN/OUT	THREADS	DIMENSIONS mm		
					A	B	C
SA1350301	DP 5 MONO 1/2" OT SANIC	5"	1/2"	BRASS-BSP	185	122	107
SA1350401	DP 5 MONO 3/4" OT SANIC	5"	3/4"	BRASS-BSP	185	122	107
SA1350701	DP 5 MONO 1" OT SANIC	5"	1"	BRASS-BSP	185	122	107
SA1351301	DP 7 MONO 1/2" OT SANIC	7"	1/2"	BRASS-BSP	233	122	107
SA1351401	DP 7 MONO 3/4" OT SANIC	7"	3/4"	BRASS-BSP	233	122	107
SA1351701	DP 7 MONO 1" OT SANIC	7"	1"	BRASS-BSP	233	122	107
SA1380301	DP 10 MONO 1/2" OT SANIC	10"	1/2"	BRASS-BSP	325	122	107
SA1380401	DP 10 MONO 3/4" OT SANIC	10"	3/4"	BRASS-BSP	325	122	107
SA1380701	DP 10 MONO 1" OT SANIC	10"	1"	BRASS-BSP	325	122	107
SA1381301	DP 20 MONO 1/2" OT SANIC	20"	1/2"	BRASS-BSP	577	122	107
SA1381401	DP 20 MONO 3/4" OT SANIC	20"	3/4"	BRASS-BSP	577	122	107
SA1381701	DP 20 MONO 1" OT SANIC	20"	1"	BRASS-BSP	577	122	107

HOUSINGS WITH PLASTIC BSP THREADS

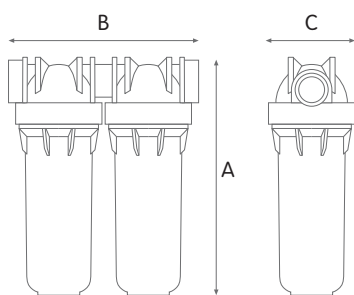
CODE	MODEL	SUITABLE CARTRIDGE	IN/OUT	THREADS	DIMENSIONS mm		
					A	B	C
SA1350101	DP 5 MONO 1/4" IN SANIC	5"	1/4"	PLASTIC-BSP	185	122	107
SA1350201	DP 5 MONO 3/8" IN SANIC	5"	3/8"	PLASTIC-BSP	185	122	107
SA1350311	DP 5 MONO 1/2" IN SANIC	5"	1/2"	PLASTIC-BSP	185	122	107
SA1350411	DP 5 MONO 3/4" IN SANIC	5"	3/4"	PLASTIC-BSP	185	122	107
SA1350711	DP 5 MONO 1" IN SANIC	5"	1"	PLASTIC-BSP	185	122	107
SA1351101	DP 7 MONO 1/4" IN SANIC	7"	1/4"	PLASTIC-BSP	233	122	107
SA1351201	DP 7 MONO 3/8" IN SANIC	7"	3/8"	PLASTIC-BSP	233	122	107
SA1351311	DP 7 MONO 1/2" IN SANIC	7"	1/2"	PLASTIC-BSP	233	122	107
SA1351411	DP 7 MONO 3/4" IN SANIC	7"	3/4"	PLASTIC-BSP	233	122	107
SA1351711	DP 7 MONO 1" IN SANIC	7"	1"	PLASTIC-BSP	233	122	107
SA1380101	DP 10 MONO 1/4" IN SANIC	10"	1/4"	PLASTIC-BSP	325	122	107
SA1380201	DP 10 MONO 3/8" IN SANIC	10"	3/8"	PLASTIC-BSP	325	122	107
SA1380311	DP 10 MONO 1/2" IN SANIC	10"	1/2"	PLASTIC-BSP	325	122	107
SA1380411	DP 10 MONO 3/4" IN SANIC	10"	3/4"	PLASTIC-BSP	325	122	107
SA1380711	DP 10 MONO 1" IN SANIC	10"	1"	PLASTIC-BSP	325	122	107
SA1381311	DP 20 MONO 1/2" IN SANIC	20"	1/2"	PLASTIC-BSP	577	122	107
SA1381411	DP 20 MONO 3/4" IN SANIC	20"	3/4"	PLASTIC-BSP	577	122	107
SA1381711	DP 20 MONO 1" IN SANIC	20"	1"	PLASTIC-BSP	577	122	107

HOUSINGS WITH PLASTIC NPT THREADS

CODE	MODEL	SUITABLE CARTRIDGE	IN/OUT	THREADS	DIMENSIONS mm		
					A	B	C
SA1350121	DP 5 MONO 1/4" NPT IN SANIC	5"	1/4"	PLASTIC-NPT	185	122	107
SA1350421	DP 5 MONO 3/4" NPT IN SANIC	5"	3/4"	PLASTIC-NPT	185	122	107
SA1350721	DP 5 MONO 1" NPT IN SANIC	5"	1"	PLASTIC-NPT	185	122	107
SA1351121	DP 7 MONO 1/4" NPT IN SANIC	7"	1/4"	PLASTIC-NPT	233	122	107
SA1351421	DP 7 MONO 3/4" NPT IN SANIC	7"	3/4"	PLASTIC-NPT	233	122	107
SA1351721	DP 7 MONO 1" NPT IN SANIC	7"	1"	PLASTIC-NPT	233	122	107
SA1380121	DP 10 MONO 1/4" NPT IN SANIC	10"	1/4"	PLASTIC-NPT	325	122	107
SA1380421	DP 10 MONO 3/4" NPT IN SANIC	10"	3/4"	PLASTIC-NPT	325	122	107
SA1380721	DP 10 MONO 1" NPT IN SANIC	10"	1"	PLASTIC-NPT	325	122	107
SA1381421	DP 20 MONO 3/4" NPT IN SANIC	20"	3/4"	PLASTIC-NPT	577	122	107
SA1381721	DP 20 MONO 1" NPT IN SANIC	20"	1"	PLASTIC-NPT	577	122	107



DP DUO SANIC



WORKING CONDITIONS

Max working pressure _____ 8 bar (116 psi)
 Max working temperature _____ 45°C (113°F)
 Min working temperature _____ 4°C (39,2°F)

SPECIFICATIONS

Non-toxic materials, suitable for drinking water.
 Head: reinforced polypropylene.
 Bowl: PET with antimicrobial technology.
 O-ring: EPDM.
 Breather-valve: body stainless steel, o-ring EPDM.
 IN/OUT brass threads: CW 614 N brass.



DP DUO SANIC

HOUSINGS WITH BRASS BSP THREADS

CODE	MODEL	SUITABLE CARTRIDGE	IN/OUT	THREADS	DIMENSIONS mm		
					A	B	C
SA1360301	DP 5 DUO 1/2" OT SANIC	5"	1/2"	BRASS-BSP	185	228	107
SA1360401	DP 5 DUO 3/4" OT SANIC	5"	3/4"	BRASS-BSP	185	228	107
SA1360701	DP 5 DUO 1" OT SANIC	5"	1"	BRASS-BSP	185	228	107
SA1361301	DP 7 DUO 1/2" OT SANIC	7"	1/2"	BRASS-BSP	233	228	107
SA1361401	DP 7 DUO 3/4" OT SANIC	7"	3/4"	BRASS-BSP	233	228	107
SA1361701	DP 7 DUO 1" OT SANIC	7"	1"	BRASS-BSP	233	228	107
SA1390301	DP 10 DUO 1/2" OT SANIC	10"	1/2"	BRASS-BSP	325	228	107
SA1390401	DP 10 DUO 3/4" OT SANIC	10"	3/4"	BRASS-BSP	325	228	107
SA1390701	DP 10 DUO 1" OT SANIC	10"	1"	BRASS-BSP	325	228	107
SA1391301	DP 20 DUO 1/2" OT SANIC	20"	1/2"	BRASS-BSP	577	228	107
SA1391401	DP 20 DUO 3/4" OT SANIC	20"	3/4"	BRASS-BSP	577	228	107
SA1391701	DP 20 DUO 1" OT SANIC	20"	1"	BRASS-BSP	577	228	107



HOUSINGS WITH PLASTIC BSP THREADS

CODE	MODEL	SUITABLE CARTRIDGE	IN/OUT	THREADS	DIMENSIONS mm		
					A	B	C
SA1360101	DP 5 DUO 1/4" IN SANIC	5"	1/4"	PLASTIC-BSP	185	228	107
SA1360311	DP 5 DUO 1/2" IN SANIC	5"	1/2"	PLASTIC-BSP	185	228	107
SA1360411	DP 5 DUO 3/4" IN SANIC	5"	3/4"	PLASTIC-BSP	185	228	107
SA1360711	DP 5 DUO 1" IN SANIC	5"	1"	PLASTIC-BSP	185	228	107
SA1361101	DP 7 DUO 1/4" IN SANIC	7"	1/4"	PLASTIC-BSP	233	228	107
SA1361311	DP 7 DUO 1/2" IN SANIC	7"	1/2"	PLASTIC-BSP	233	228	107
SA1361411	DP 7 DUO 3/4" IN SANIC	7"	3/4"	PLASTIC-BSP	233	228	107
SA1361711	DP 7 DUO 1" IN SANIC	7"	1"	PLASTIC-BSP	233	228	107
SA1390101	DP 10 DUO 1/4" IN SANIC	10"	1/4"	PLASTIC-BSP	325	228	107
SA1390311	DP 10 DUO 1/2" IN SANIC	10"	1/2"	PLASTIC-BSP	325	228	107
SA1390411	DP 10 DUO 3/4" IN SANIC	10"	3/4"	PLASTIC-BSP	325	228	107
SA1390711	DP 10 DUO 1" IN SANIC	10"	1"	PLASTIC-BSP	325	228	107
SA1391311	DP 20 DUO 1/2" IN SANIC	20"	1/2"	PLASTIC-BSP	577	228	107
SA1391411	DP 20 DUO 3/4" IN SANIC	20"	3/4"	PLASTIC-BSP	577	228	107
SA1391711	DP 20 DUO 1" IN SANIC	20"	1"	PLASTIC-BSP	577	228	107

HOUSINGS WITH PLASTIC NPT THREADS

CODE	MODEL	SUITABLE CARTRIDGE	IN/OUT	THREADS	DIMENSIONS mm		
					A	B	C
SA1360121	DP 5 DUO 1/4" NPT IN SANIC	5"	1/4"	PLASTIC-NPT	185	228	107
SA1360421	DP 5 DUO 3/4" NPT IN SANIC	5"	3/4"	PLASTIC-NPT	185	228	107
SA1360721	DP 5 DUO 1" NPT IN SANIC	5"	1"	PLASTIC-NPT	185	228	107
SA1361121	DP 7 DUO 1/4" NPT IN SANIC	7"	1/4"	PLASTIC-NPT	233	228	107
SA1361421	DP 7 DUO 3/4" NPT IN SANIC	7"	3/4"	PLASTIC-NPT	233	228	107
SA1361721	DP 7 DUO 1" NPT IN SANIC	7"	1"	PLASTIC-NPT	233	228	107
SA1390121	DP 10 DUO 1/4" NPT IN SANIC	10"	1/4"	PLASTIC-NPT	325	228	107
SA1390421	DP 10 DUO 3/4" NPT IN SANIC	10"	3/4"	PLASTIC-NPT	325	228	107
SA1390721	DP 10 DUO 1" NPT IN SANIC	10"	1"	PLASTIC-NPT	325	228	107
SA1391421	DP 20 DUO 3/4" NPT IN SANIC	20"	3/4"	PLASTIC-NPT	577	228	107
SA1391721	DP 20 DUO 1" NPT IN SANIC	20"	1"	PLASTIC-NPT	577	228	107



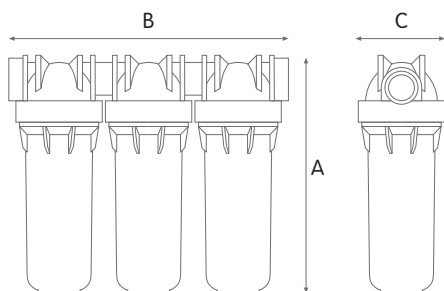
DP TRIO SANIC

WORKING CONDITIONS

Max working pressure _____ 8 bar (116 psi)
 Max working temperature _____ 45°C (113°F)
 Min working temperature _____ 4°C (39,2°F)

SPECIFICATIONS

Non-toxic materials, suitable for drinking water.
 Head: reinforced polypropylene.
 Bowl: PET with antimicrobial technology.
 O-ring: EPDM.
 Breather-valve: body stainless steel, o-ring EPDM.
 IN/OUT brass threads: CW 614 N brass.



DP TRIO SANIC

HOUSINGS WITH BRASS BSP THREADS

CODE	MODEL	SUITABLE CARTRIDGE	IN/OUT	THREADS	DIMENSIONS mm		
					A	B	C
SA1370301	DP 5 TRIO 1/2" OT SANIC	5"	1/2"	BRASS-BSP	185	336	107
SA1370401	DP 5 TRIO 3/4" OT SANIC	5"	3/4"	BRASS-BSP	185	336	107
SA1370701	DP 5 TRIO 1" OT SANIC	5"	1"	BRASS-BSP	185	336	107
SA1371301	DP 7 TRIO 1/2" OT SANIC	7"	1/2"	BRASS-BSP	233	336	107
SA1371401	DP 7 TRIO 3/4" OT SANIC	7"	3/4"	BRASS-BSP	233	336	107
SA1371701	DP 7 TRIO 1" OT SANIC	7"	1"	BRASS-BSP	233	336	107
SA1400301	DP 10 TRIO 1/2" OT SANIC	10"	1/2"	BRASS-BSP	325	336	107
SA1400401	DP 10 TRIO 3/4" OT SANIC	10"	3/4"	BRASS-BSP	325	336	107
SA1400701	DP 10 TRIO 1" OT SANIC	10"	1"	BRASS-BSP	325	336	107
SA1401301	DP 20 TRIO 1/2" OT SANIC	20"	1/2"	BRASS-BSP	577	336	107
SA1401401	DP 20 TRIO 3/4" OT SANIC	20"	3/4"	BRASS-BSP	577	336	107
SA1401701	DP 20 TRIO 1" OT SANIC	20"	1"	BRASS-BSP	577	336	107



HOUSINGS WITH PLASTIC BSP THREADS

CODE	MODEL	SUITABLE CARTRIDGE	IN/OUT	THREADS	DIMENSIONS mm		
					A	B	C
SA1370101	DP 5 TRIO 1/4" IN SANIC	5"	1/4"	PLASTIC-BSP	185	336	107
SA1370311	DP 5 TRIO 1/2" IN SANIC	5"	1/2"	PLASTIC-BSP	185	336	107
SA1370411	DP 5 TRIO 3/4" IN SANIC	5"	3/4"	PLASTIC-BSP	185	336	107
SA1370711	DP 5 TRIO 1" IN SANIC	5"	1"	PLASTIC-BSP	185	336	107
SA1371101	DP 7 TRIO 1/4" IN SANIC	7"	1/4"	PLASTIC-BSP	233	336	107
SA1371311	DP 7 TRIO 1/2" IN SANIC	7"	1/2"	PLASTIC-BSP	233	336	107
SA1371411	DP 7 TRIO 3/4" IN SANIC	7"	3/4"	PLASTIC-BSP	233	336	107
SA1371711	DP 7 TRIO 1" IN SANIC	7"	1"	PLASTIC-BSP	233	336	107
SA1400101	DP 10 TRIO 1/4" IN SANIC	10"	1/4"	PLASTIC-BSP	325	336	107
SA1400311	DP 10 TRIO 1/2" IN SANIC	10"	1/2"	PLASTIC-BSP	325	336	107
SA1400411	DP 10 TRIO 3/4" IN SANIC	10"	3/4"	PLASTIC-BSP	325	336	107
SA1400711	DP 10 TRIO 1" IN SANIC	10"	1"	PLASTIC-BSP	325	336	107
SA1401311	DP 20 TRIO 1/2" IN SANIC	20"	1/2"	PLASTIC-BSP	577	336	107
SA1401411	DP 20 TRIO 3/4" IN SANIC	20"	3/4"	PLASTIC-BSP	577	336	107
SA1401711	DP 20 TRIO 1" IN SANIC	20"	1"	PLASTIC-BSP	577	336	107



HOUSINGS WITH PLASTIC NPT THREADS

CODE	MODEL	SUITABLE CARTRIDGE	IN/OUT	THREADS	DIMENSIONS mm		
					A	B	C
SA1370121	DP 5 TRIO 1/4" NPT IN SANIC	5"	1/4"	PLASTIC-NPT	185	336	107
SA1370421	DP 5 TRIO 3/4" NPT IN SANIC	5"	3/4"	PLASTIC-NPT	185	336	107
SA1370721	DP 5 TRIO 1" NPT IN SANIC	5"	1"	PLASTIC-NPT	185	336	107
SA1371121	DP 7 TRIO 1/4" NPT IN SANIC	7"	1/4"	PLASTIC-NPT	233	336	107
SA1371421	DP 7 TRIO 3/4" NPT IN SANIC	7"	3/4"	PLASTIC-NPT	233	336	107
SA1371721	DP 7 TRIO 1" NPT IN SANIC	7"	1"	PLASTIC-NPT	233	336	107
SA1400121	DP 10 TRIO 1/4" NPT IN SANIC	10"	1/4"	PLASTIC-NPT	325	336	107
SA1400421	DP 10 TRIO 3/4" NPT IN SANIC	10"	3/4"	PLASTIC-NPT	325	336	107
SA1400721	DP 10 TRIO 1" NPT IN SANIC	10"	1"	PLASTIC-NPT	325	336	107
SA1401421	DP 20 TRIO 3/4" NPT IN SANIC	20"	3/4"	PLASTIC-NPT	577	336	107
SA1401721	DP 20 TRIO 1" NPT IN SANIC	20"	1"	PLASTIC-NPT	577	336	107