

Chlorinator System Assembly for Clack WS1 – WS1.25 12 VDC



Article Code 5303020347 Chlorinator System Assembly for Clack

Config SUK000463: for systems where you hold the BLFC in the chlorinator

Config SUK000556: for systems where you place the BLFC in the brine tank with the air check/SBV

Application

Possible on valves WS1 – WS1.25 and controllers TC, EI and CI

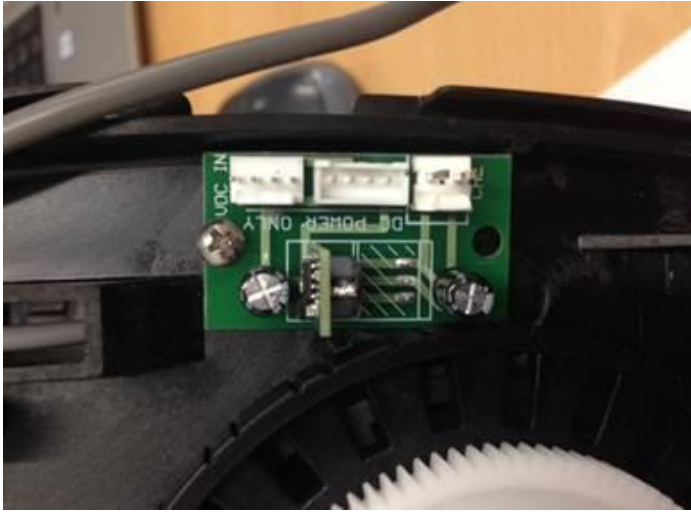
Only compatible with new 15 V DC Clack adapters (V3186EU-05 and V3186EU-06)

How does it work?

As of the start of a regeneration, the micro switch is opened and the chlorine generator is provided with the voltage. The voltage will be supplied to the generator through the entire regeneration cycle; but will only create amperage when brine is ran across the probes to create the chlorine. So the length in which the generator is powered would be the length of the regeneration cycle; the portion in which it is “active” would only be the time it seeing brine. Essentially from the time it goes into brine draw until the air check seals in the brine tank. The chlorine generator is providing approximately 2ppm of chlorine.

How to mount the kit onto a Clack valve?

Step 1 Mount DC daughter board at backplate



Step 2 Wiring on the DC Daughter board



Step 3 Mounting and wiring micro switch front view



Step 4 Mounting and wiring micro switch side view



Step 5 Final assembly front view

